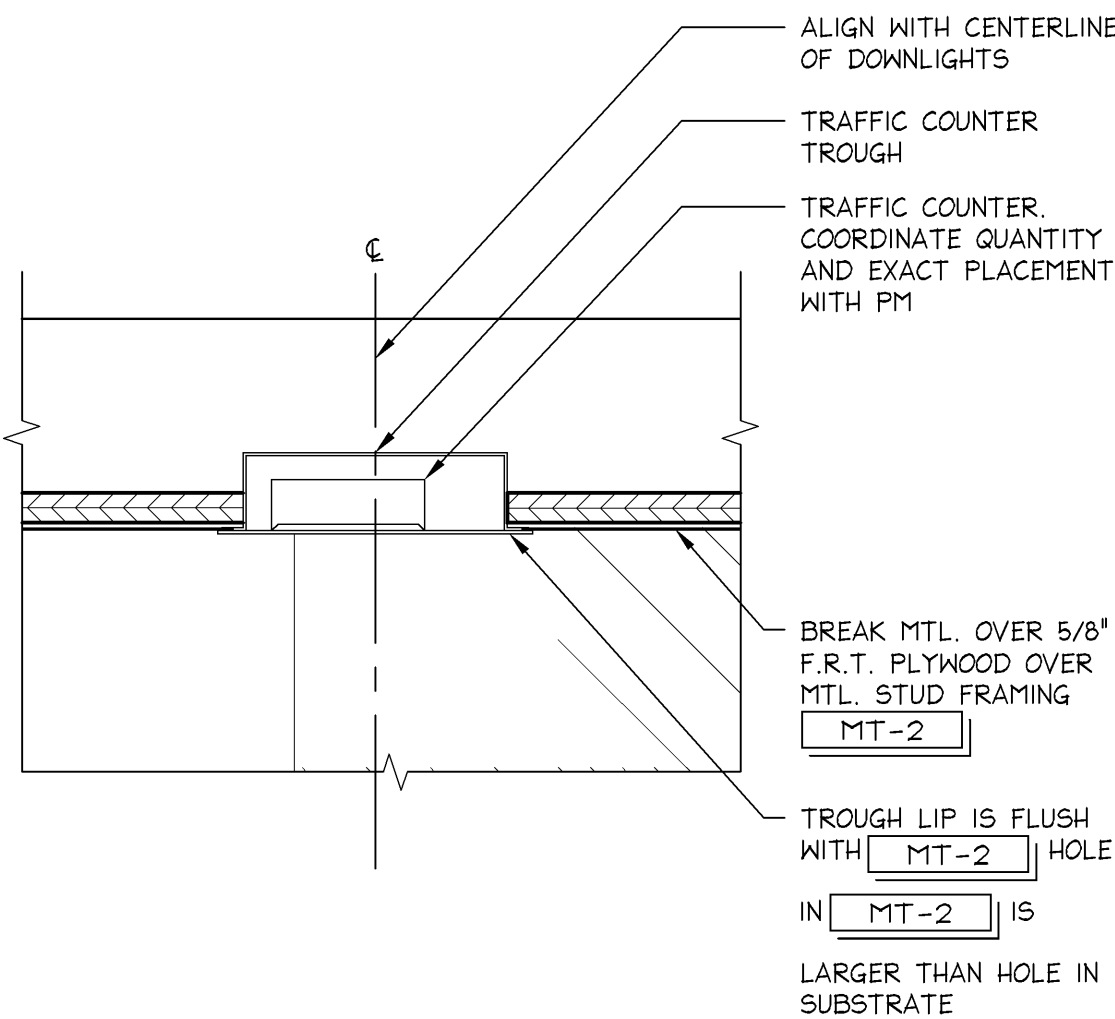


TRAFFIC COUNTER
DETAIL - WBC

3" = 1'-0"

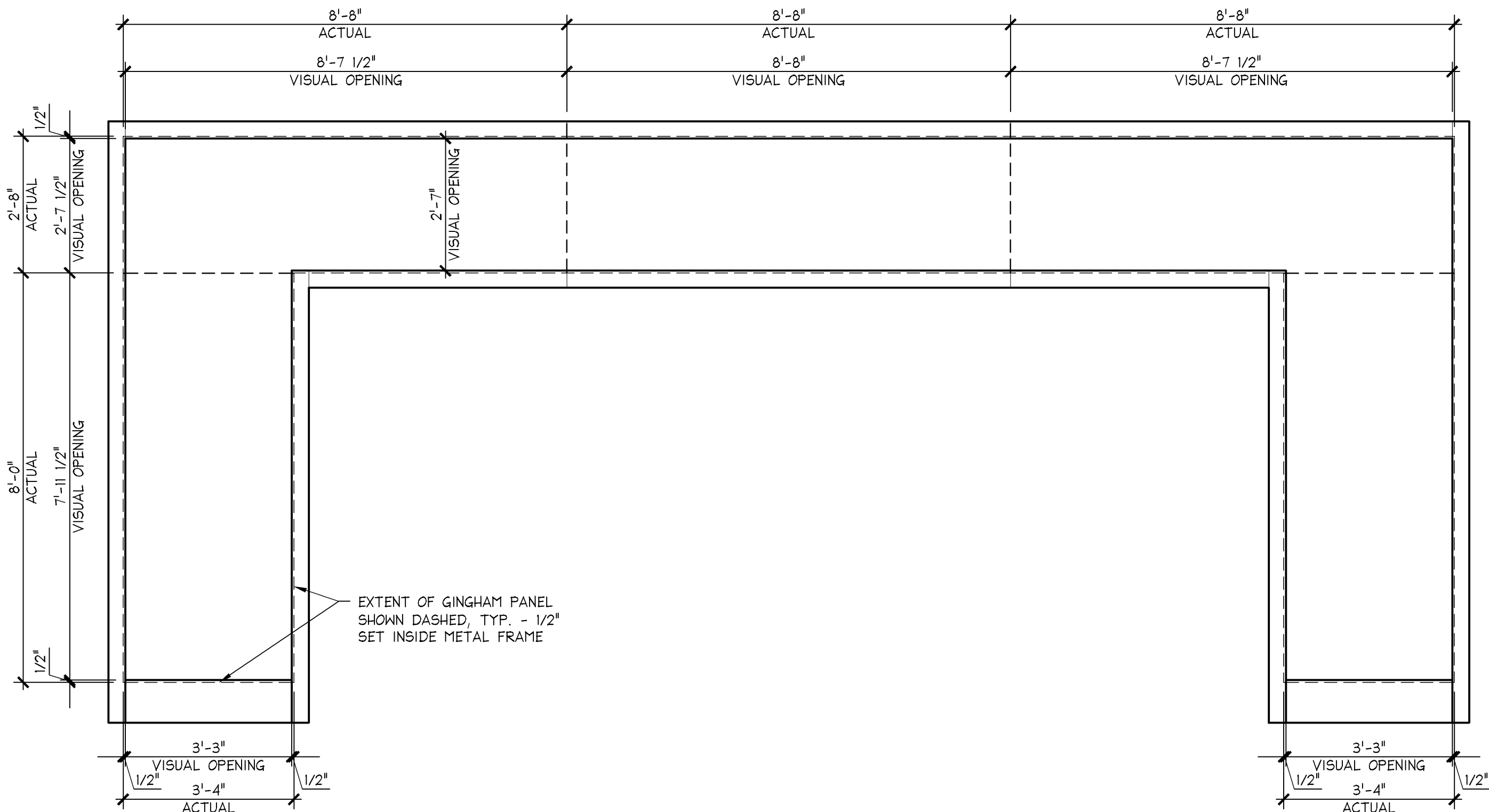
S



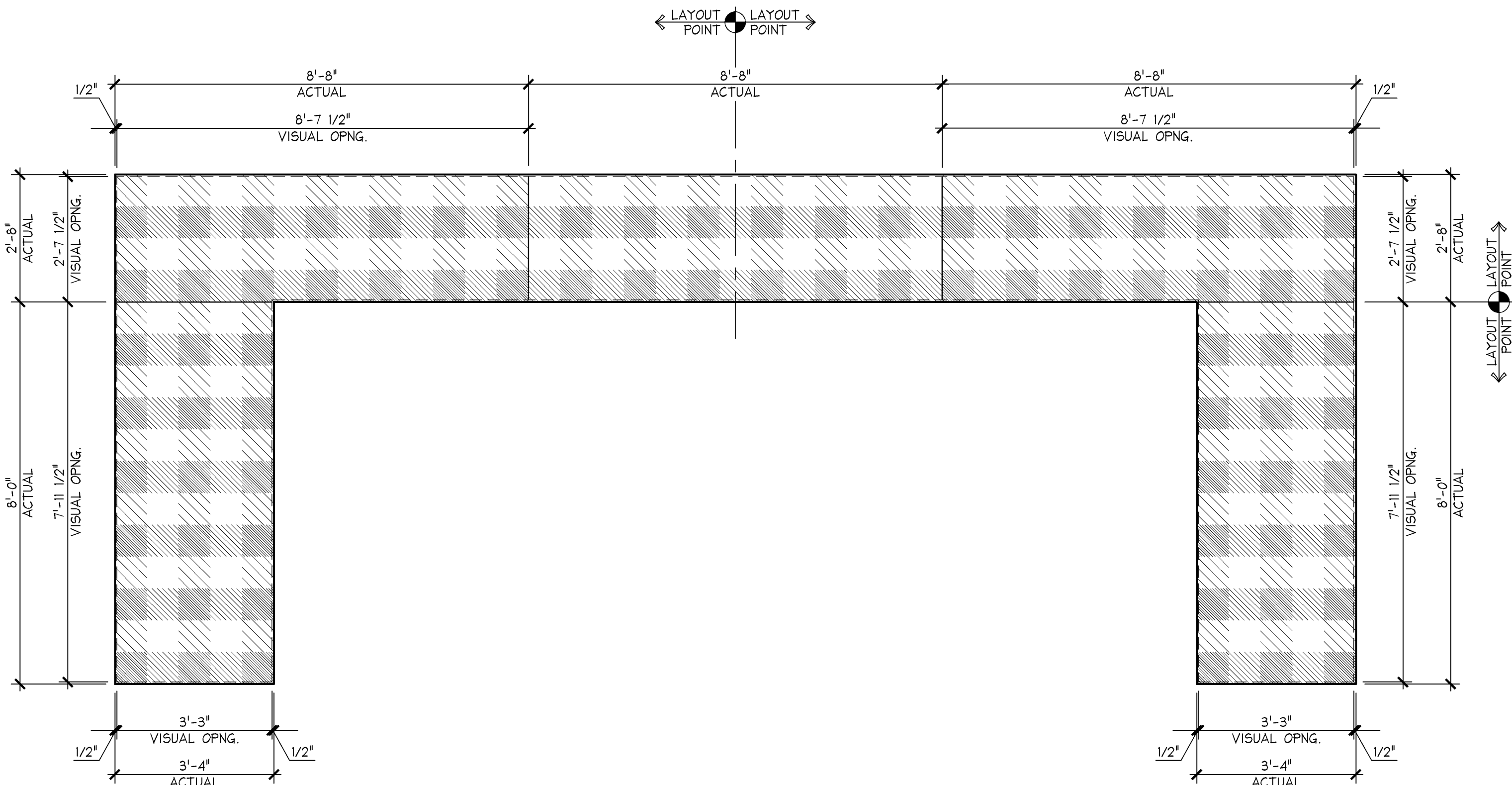
TRAFFIC COUNTER
DETAIL - BBW

3" = 1'-0"

M



2 STOREFRONT FRAME LAYOUT



1 STOREFRONT GINGHAM PANEL LAYOUT

NOTE:
GLASS/GINGHAM PANEL
DIMENSIONS ARE CRITICAL.
DIMENSION INDICATED MUST
BE MAINTAINED.

STOREFRONT GINGHAM PANEL LAYOUT - BBW

1/2" = 1'-0"

42E-A081-A01-ELEV

E

12.06.10

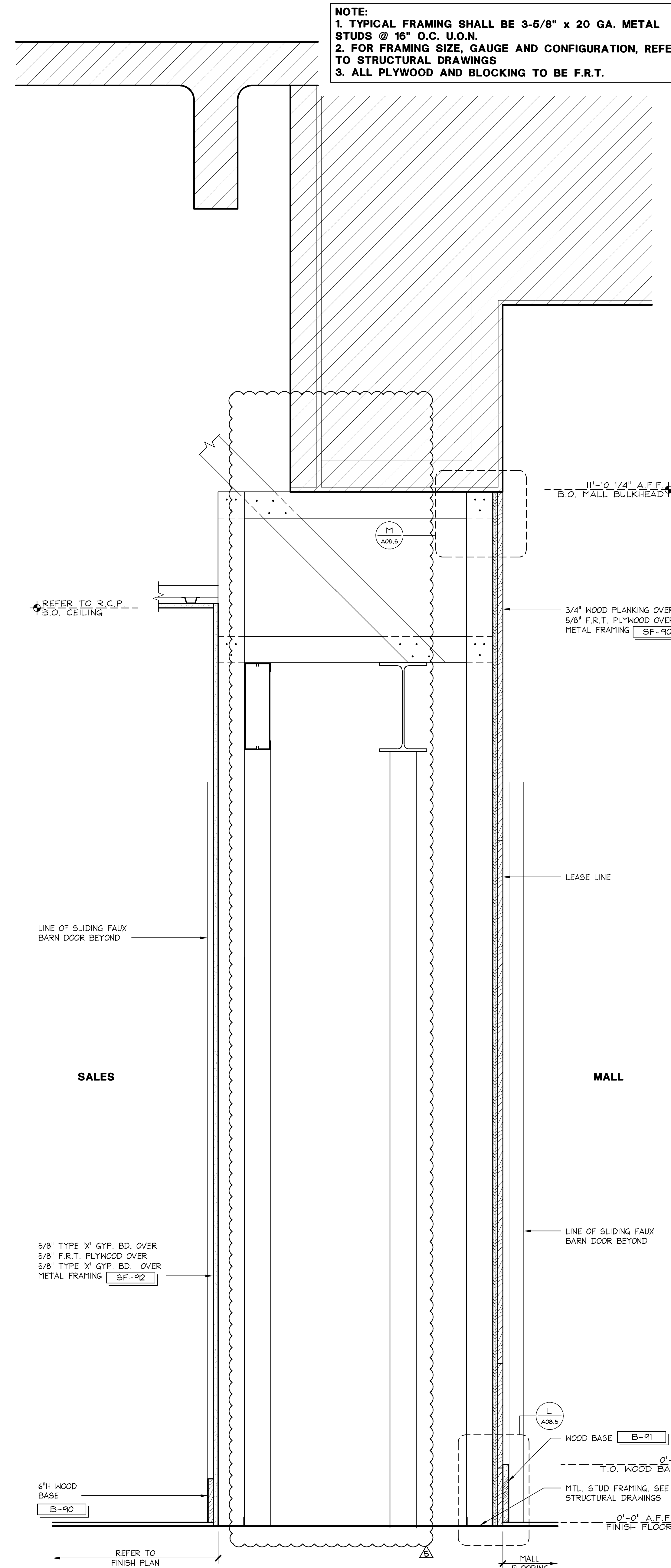
SECTION THRU PLANKING WALL - WHITE BARN

1 1/2" = 1'-0"

42S-A083-803-SECT

A

03.02.10



SHREMSHOCK
Shremshock Architects, Inc.
6150 S. Sunbury Rd., Westerville, OH 43081
t: 614 545 4550 | f: 614 545 4555 | shremshock.com
Gerald S. Shremshock, Architect
Timothy J. Shremshock, Architect

ELITE CONSTRUCTION GROUP
LAKE JACKSON, TX
PHONE: 979-284-0712
NOTE: THESE PRINTS HAVE BEEN
REDUCED BY 50 PERCENT. SCALE
WILL BE 50 PERCENT OF WHAT IS
NOTED ON PLANS.

Limitedbrands
LIMITED STORE PLANNING, INC.
d/b/a STORE DESIGN & CONSTRUCTION
Three Limited Parkway • Columbus, Ohio 43230
Telephone: 614.415.7000 • Fax: 614.415.7349

PROJECT INFORMATION: **24200161**
BATH & BODY WORKS
THE GALLERIA II
SPACE INDUSTRIES RD.
SUGAR CREEK, TX 77066
HOUSTON, TX 77066

SCOPE: REMODEL
DESIGN TYPE: EASTON-G
LSDAC PROJECT #: 00061216
A/E PROJECT #: 130840

REVISIONS:

NO.	REVISION	DATE
1	BUILDING DEPARTMENT COMMENTS	04/11/14
2	DESIGN CHANGES/ LANDLORD COMMENTS/ MASTERS UPDATES	05/26/14
3	DESIGN CHANGES	06/27/14
4	DESIGN CHANGES	07/24/14

DATE ISSUED: 3/7/14
DESIGNED BY: SB
DRAWN BY: JLH
CHECKED BY: RHW

**STOREFRONT
SECTION &
PANEL LAYOUT**

DRAWING NUMBER:
A08.3a